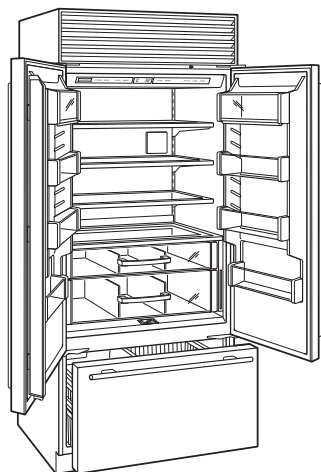


**FEATURES**

- Four design options: framed, overlay, flush inset and stainless steel.
- Dual refrigeration system ensures the freshest food and energy efficiency.
- Electronic microprocessor constantly monitors entire unit to ensure proper food storage environment.
- Air purification system reduces odors, bacteria, viruses and ethylene gas.
- Advanced water filtration system.
- French doors require less floor space for door clearance to accommodate virtually any-size kitchen.
- Illuminated touch control panel.
- Bright interior lighting throughout, including storage drawer area.
- Adjustable spill-proof glass shelves.
- Crisper and deli drawers form a lower-temperature zone.
- Soft-close glide system on refrigerator storage drawers.
- Easy-access flip-up grille.
- Informational freshness cards.
- Full-extension, roll-out freezer drawer.
- Automatic ice maker provides crescent-shaped ice—max ice feature increases production for a 24-hour period.



**MODEL OPTIONS**

<b>OVERLAY</b>	
Framed, overlay, flush inset	BI-36UFD/O
<b>STAINLESS STEEL</b>	
Tubular handles	BI-36UFD/S/TH
Pro handles	BI-36UFD/S/PH

**INTERIOR FEATURES**

<b>REFRIGERATOR</b>	
3 Adjustable glass shelves	
1 Stationary glass shelf	
1 High-humidity drawer with dividers	
1 Storage drawer with dividers	
4 Adjustable door shelves	
2 Stationary door shelves	
2 Adjustable dairy compartments	
<b>FREEZER</b>	
Full-extension roll-out freezer drawer	
Two-tier wire storage baskets	
Automatic ice maker	

**ACCESSORIES**

- Grilles for 83" or 88" finished height (84" is standard).
- Framed front panels in white or stainless steel.
- Flush inset panels in stainless steel with tubular or pro handles.
- Custom front panel mounting kit.
- Side panel in white or stainless steel.
- Stainless steel tubular and pro handles.
- Full-length standard and extended framed handles.
- Stainless steel kickplate.
- Dozen egg container.
- Replacement air purification cartridge and water filter.

Accessories available through an authorized Sub-Zero dealer. For local dealer information, visit the find a showroom section of our website, subzero.com.

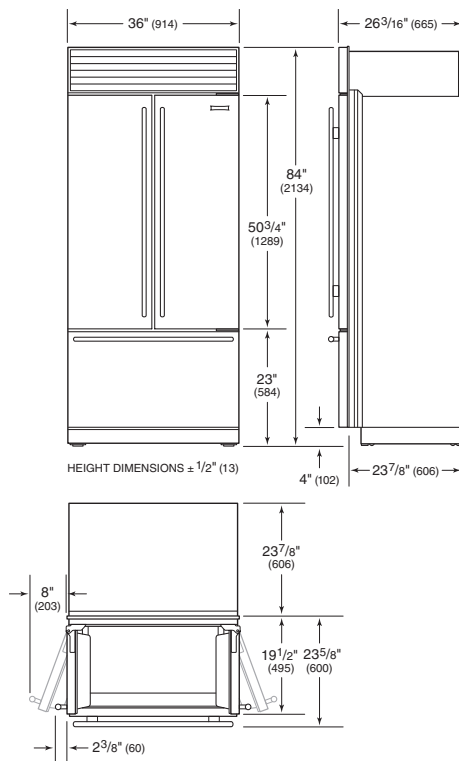
## SPECIFICATIONS

PRODUCT	
Dimensions	36"W x 84"H x 24"D
Weight	529 lb
CAPACITY	
Refrigerator	15.7 cu ft
Freezer	5.3 cu ft
ELECTRICAL	
Supply	115 VAC, 60 Hz
Service	15 amp circuit
PLUMBING	
Supply	1/4" OD copper, braided stainless steel or PEX tubing
Pressure	35-120 psi

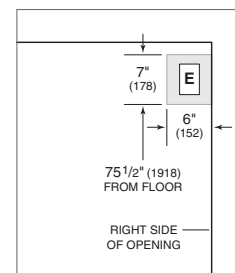
Specifications are subject to change without notice. Visit [subzero.com/specs](http://subzero.com/specs) for the most up-to-date information.

Dimensions may vary  $\pm 1/8"$  (3). Dimensions in parentheses are millimeters unless otherwise specified.

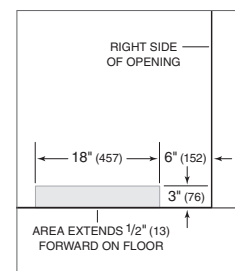
## DIMENSIONS



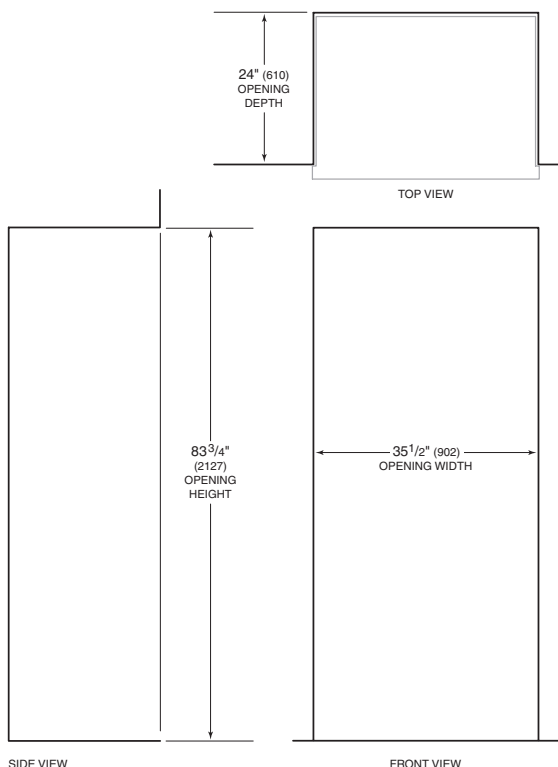
## ELECTRICAL



## PLUMBING

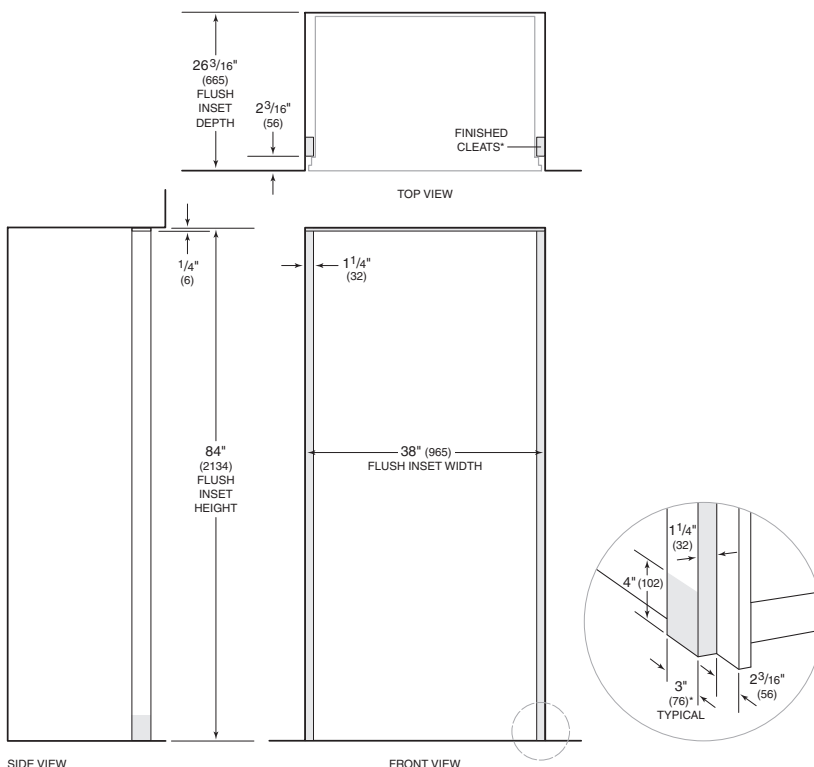


## STANDARD INSTALLATION



NOTE: Shaded line represents profile of unit.

## FLUSH INSET INSTALLATION



\*3" (76) typical depth. Shaded areas will be visible and should be finished to match cabinetry. NOTE: Shaded line represents profile of unit with 3/4" (19) panel.