



PREPARED EXCLUSIVELY FOR MS TPI

Notes:

a

Specifications are subject to change without notice. This information was generated on 24aAe-0or0aA-IonA.D.-0onA12 and reflects the published specifications for the included models at that time. For detailed installation specifications prior to finalizing your cabinetry/enclosures please download the Design Guides or contact Customer Care.

ICBPRO3650



FEATURES

Rigorously tested to ensure decades of use

Exceptional support from Customer Care team

Scrubs the air of ethylene, mold, viruses, and bacteria every twenty minutes using NASA-based advanced air purification technology

Dual refrigeration technology preserves refrigerated foods with cool, moist air and frozen foods with frigid, dry air

Creates the ideal environment for produce in independently-controlled crisper drawer

Easy access to food with full-extension slide-out glass shelf with adjustable gates

Controls temperature within one degree of setpoint via intuitive exterior touch control panel

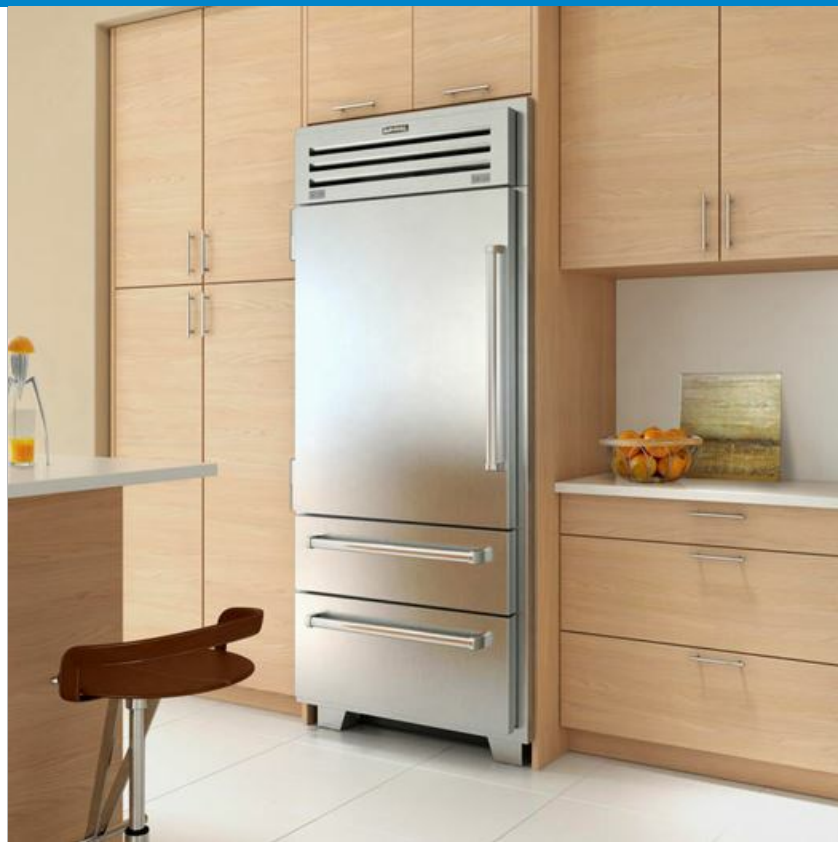
Locks in temperature and humidity with soft-close door hinge and magnetic seal on doors and drawers

Automatic ice maker with advanced water filtration system

Control brightness with soft-on LED lighting that fully illuminates the cavity, making food more visible and less likely to hide

Install directly within surrounding cabinetry for built-in, or add accessory panels for freestanding

Makes an iconic stainless-steel statement, inside and out



PRODUCT-DETAILS

REFRIGERATOR

- LED refrigerator and freezer lights
- 4 glass refrigerator shelves (3 adjustable; 1 full-extension slide-out)
- 1 high-humidity crisper drawer with adjustable dividers
- 2 stainless-steel slide-out bins
- Air purification system

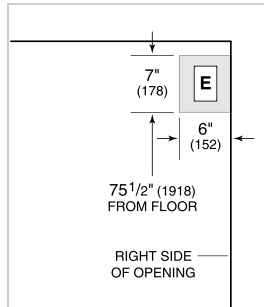
FREEZER

- 1 full-extension roll-out freezer drawer with automatic ice maker and removable ice container

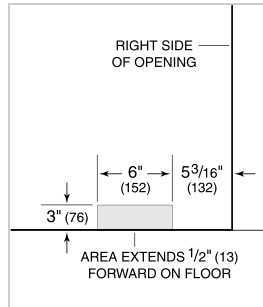
PRODUCT-SPECIFICATIONS

| | |
|-------------------------------|---------------------------|
| model | ICBPRO3650 |
| dimensions | 914mmW x 2134mmH x 610mmD |
| door-clearance | 949mm |
| drawer-clearance | 660mm |
| weight | 286 kg |
| refrigerator-capacity | 563 L |
| refrigerator-storage-capacity | 503 L |
| freezer-capacity | 136 L |
| freezer-storage-capacity | 93 L |
| electrical-supply | 220-240 VAC; 50/60 Hz |
| electrical-service | 3 A |

ELECTRICAL



PLUMBING



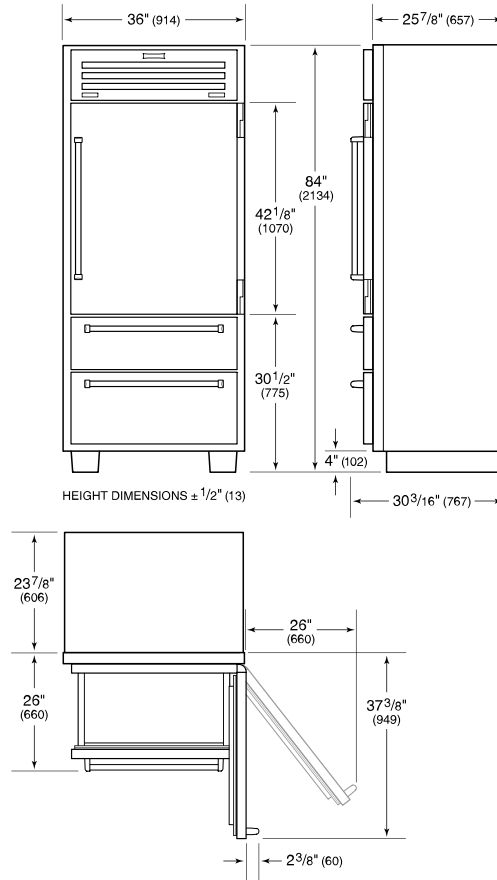
NOTE: Dimensions in parenthesis are in millimeters unless otherwise specified

INTERIOR-VIEW

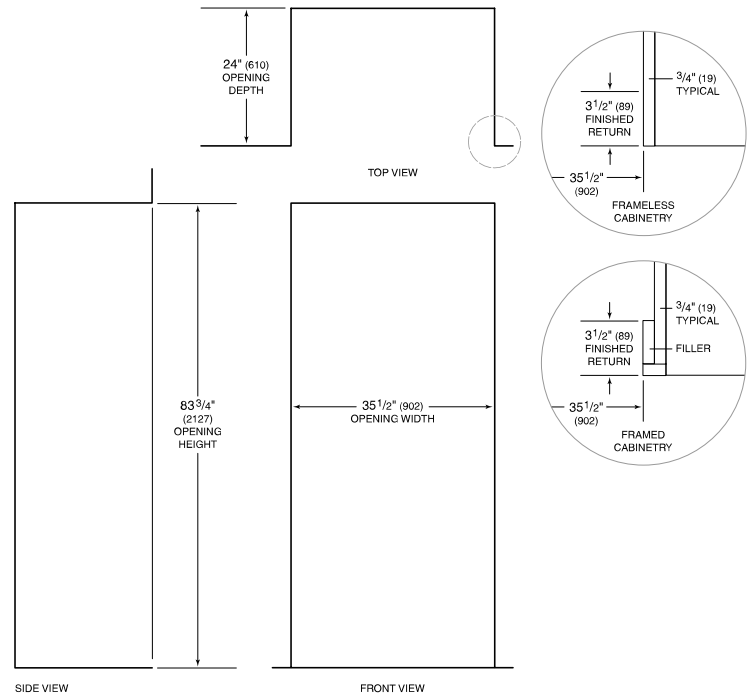


This illustration is intended for interior reference only and may not represent the exterior of the model being specified.

DIMENSIONS



STANDARD INSTALLATION



NOTE: 3 1/2" (89) finished returns will be visible and should be finished to match cabinetry.